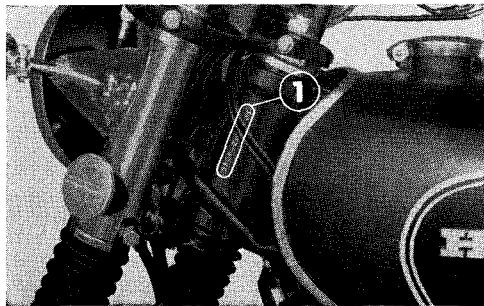


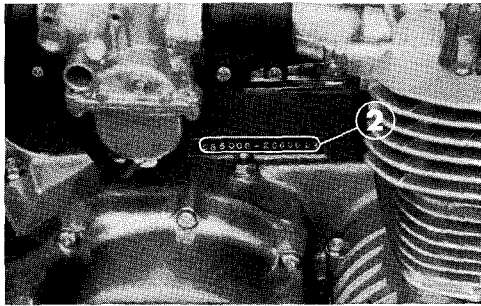
SERIAL NUMBER LOCATION

The frame serial number ① is stamped on the left of the steering head pipe, and the engine serial number ② is located on top of the crankcase left side. These numbers are required when registering the motorcycle and also for processing

warranty claims. Applicable frame or engine serial numbers should be given when ordering replacement parts.



① Frame serial number



② Engine serial number