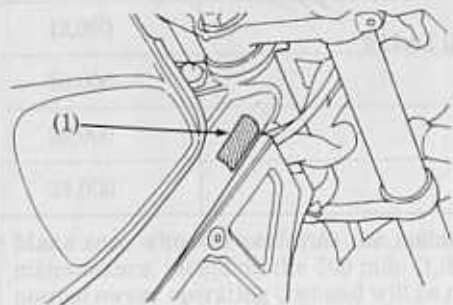


SERIAL NUMBERS

The frame and engine serial numbers are required when registering your motorcycle. They may also be required by your dealer when ordering replacement parts. Record the numbers here for your reference.

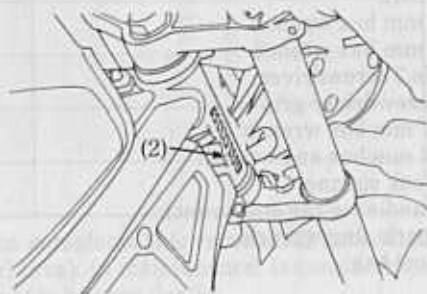
VIN _____



(1) VIN

The VIN, Vehicle Identification Number, (1) is on the Safety Certification Label affixed to the right side frame. The frame number (2) is stamped on the right side of the steering head.

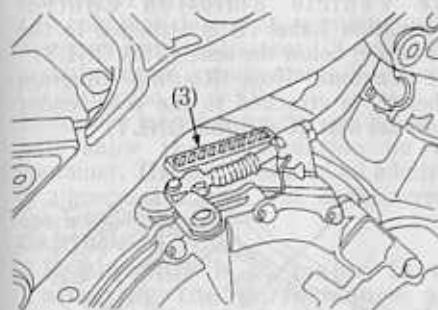
FRAME NO. _____



(2) Frame number

The engine number (3) is stamped on the right side of the crankcase.

ENGINE NO. _____



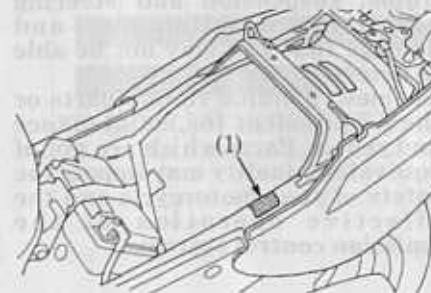
(3) Engine number

COLOR LABEL

The color label (1) is attached to the left frame rail under the seat. It is helpful when ordering replacement parts. Record the color and code here for your reference.

COLOR _____

CODE _____



(1) Color label