

OPTIONAL PARTS

Front Carrier

Max. load 10 kg (22 lbs.)



Rear Carrier

Max. load 30 kg (66 lbs.)

Trailer Hitch

Max. drawbar

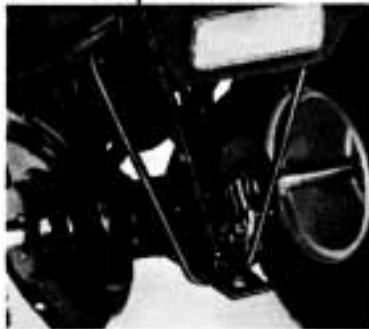
pull

90 kg (200 lbs.)

Weight on

hitch point

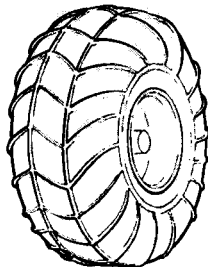
9 kg (20 lbs.)



Air pressure gauge

CAUTION

- * *Load cargo on the rear carrier as far forward as possible. Do not allow cargo to extend beyond the end of the rear carrier.*
- * *When towing a trailer, care should be taken to maintain balance and stability. Place cargo on the trailer so that it will not cause the front wheel to lift off the ground during travel.*
- * *To prevent an accident, use extreme care when adding or riding with accessories and cargo. Addition of accessories and cargo can reduce the ATC's stability, performance and safe operating speed. Accessories are designed for work applications and should be removed for recreational riding.*



Chevron pattern tire
For soft, sandy or
swampy terrain